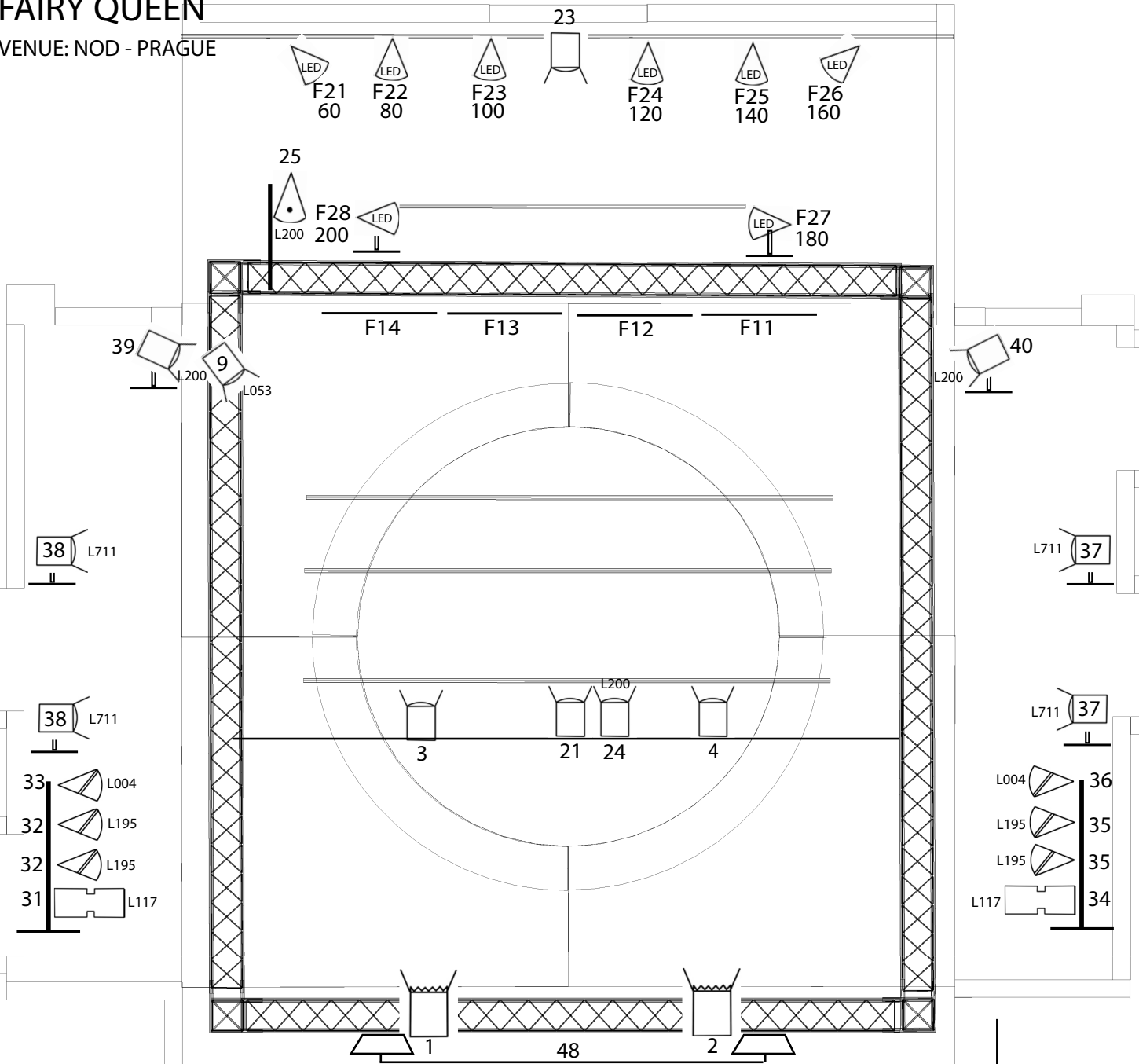




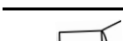

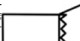



# FAIRY QUEEN

VENUE: NOD - PRAGUE



## KEY - Technical Requirements:

-  6 x PAR 64 1000W CP 62
-  1 x PAR 64 1000W CP 61
-  8 x LED PAR Elation SixPar 200
-  2 x ZOOM PROFILE 25 - 50
-  4 x SHOWTEC Sunstrip Active DMX MKII
-  12 x PC 1kW WITH BARNDOORS
-  2 x FRESNEL 2kW WITH BARNDOORS
-  2 x FLOOD LIGHT 1000W SYMM./ASSYM

<p><b>Project</b></p> <p><b>Author</b> power supply: ideal 2 x 63A, min. 1 x 63A and 1 x 32A (380V) lighting desk: MA2, LT Hydra, Strand, ETC, Compulite (programming desk) &lt;1&gt; ladder/tubular scaffolding/lift (Genie) till your grid DIMMER PACKS: 24 channels @ 2,3kW</p>	<p><b>Document name</b> NOD SÁL</p> <p><b>Version</b></p> <p>8 x FLOORSTAND</p> <p>2 x TOWER</p> <p>&lt;2&gt;</p> <p>&lt;3&gt; Drawn by: jan.mlcoch@archatheatre.cz</p>
--	---