

420PEOPLE

contemporary dance

FAIRY QUEEN (55min.)

Choreography: Václav Kuneš

Music: Zabelov Group - Jan Šíkl, Roman Zabelov

Cast: 420PEOPLE – Fanny Barrouquère, Zuzana Herényiová, Adam Sojka,

Filip Staněk, Alexandr Volný

Zabelov Group - Jan Šíkl, Roman Zabelov

Light design: Jan Mlčoch

Costumes: Olo Křížová

Premiere: 9. 3. 2017, NoD Prague

Technical requirements

1) Stage:

stage size - min. 10 x 10m

black dance floor covering the entire stage

black backdrop (alternative solution upon consultation)

On stage :

scaffolding as seen on the photo below (it is necessary to transport our own scaffolding from Prague or to rent a new one), scaffolding stands on the dance floor (using carpet squares + wooden wedge in between), the weight of our own scaffolding is about 500kg, our scaffolding is not provided with a railing - if there is no solid wall behind the scaffolding, it is necessary to solve it with the production and provide compensatory railing

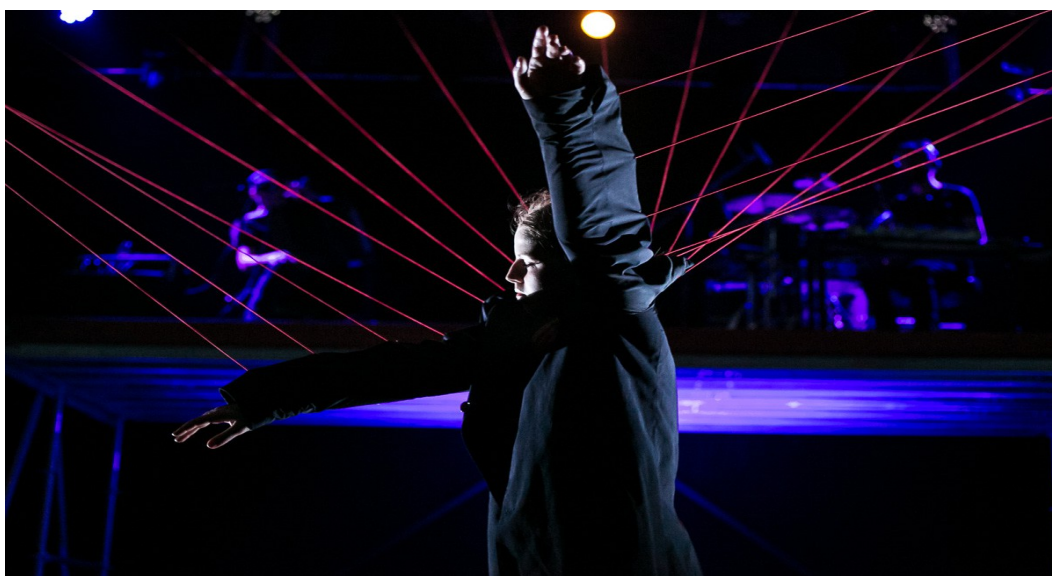
on the upper surface of the scaffolding, for its best stability, it is necessary to put the boards / ideally nivtec staging system boards - size: 4 x boards 2x1m + 1-2x board 2x0,5m (provided by the organizer)

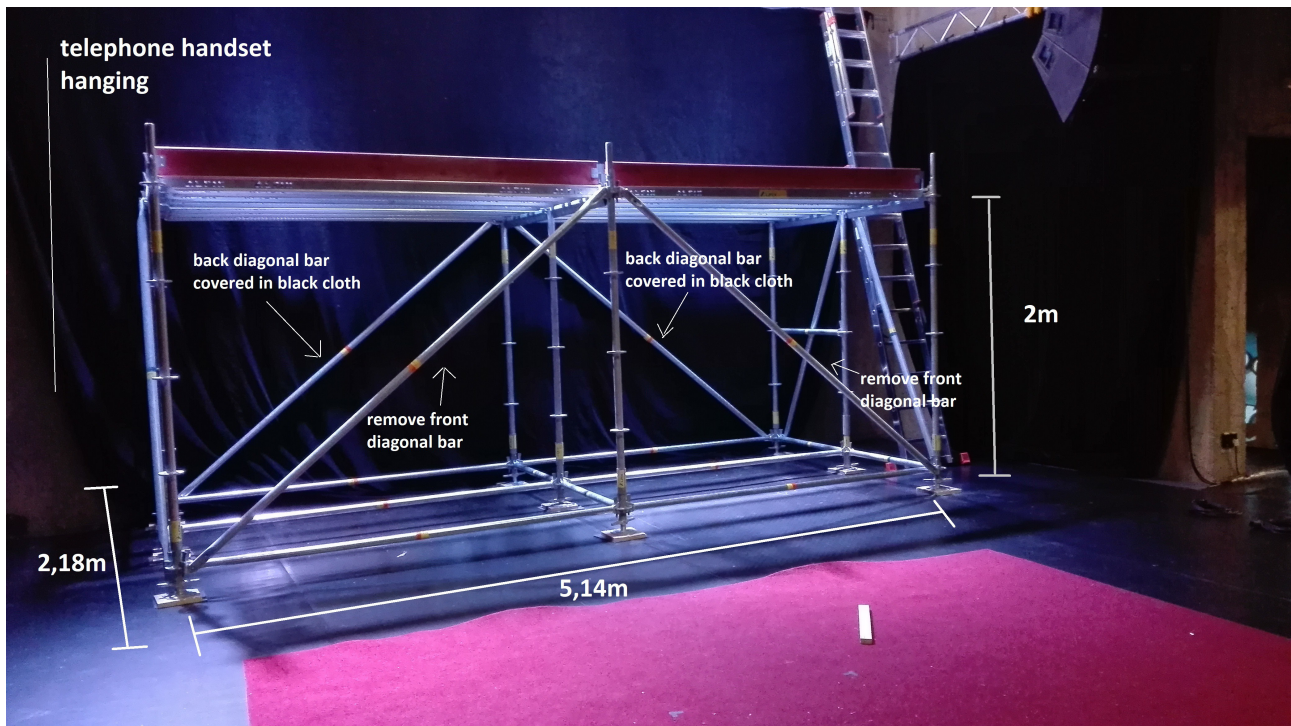
the two back diagonal bar of the scaffolding should be covered in a black cloth (to be secured in case of scaffolding rental)

coat hanging on a truss by 19 rubber bands (the coat with the rubber bands will be brought by the company, but it is necessary to check the length of the rubber bands - how they will be fastened)

on the left side beside the scaffolding there is a telephone handset hanging (handset brought by the company), fixed on a truss or elsewhere upon consultation

2 ladders for sound technicians and musicians to provide access on the scaffolding (provided by the organizer)





In case of using our own scaffolding the price of the transportation will be discussed separately. Transport is covered by the organizer. If the scaffolding is rented it is always necessary to consult it with company production team.

2) Lights (provided by organizer):

2 x Zoom Profile 25 – 50
 2 x Fresnel 2 kW + klapky
 12 x PC 1kW + klapky
 6 x PAR 64 1000W CP 62
 1 x PAR 64 1000W CP 61
 8x LED PAR Elation SixPar 200
 4x showtec Sunstrip Active DMX MKII
 2x floodlight 1kW symm./assym

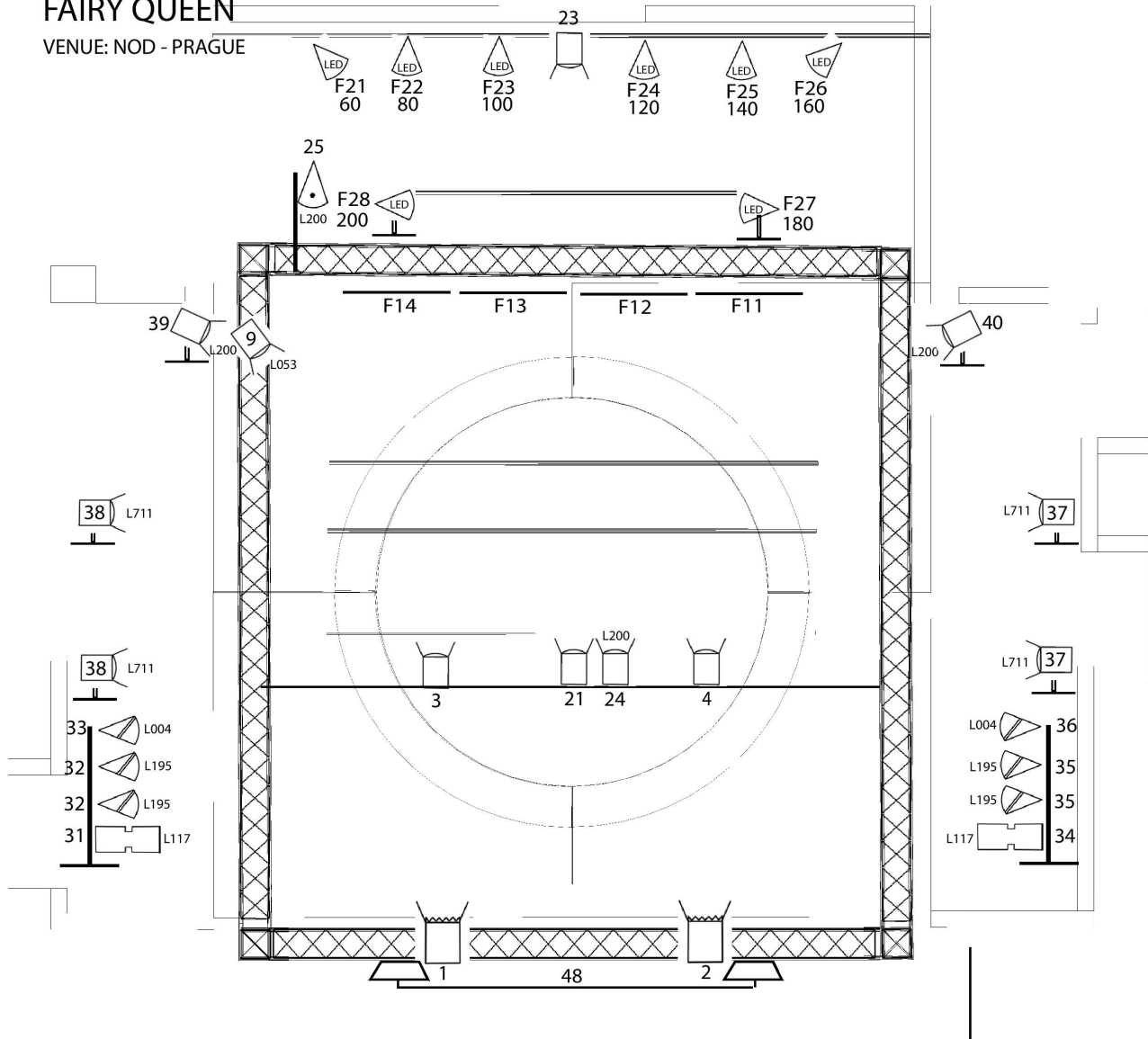
8x floorstand
 2x tower

also specified in the lighting plot below

420 PEOPLE DANCE COMPANY

FAIRY QUEEN

VENUE: NOD - PRAGUE



KEY - Technical Requirements:

- 6 x PAR 64 1000W CP 62
- 1 x PAR 64 1000W CP 61
- 8 x LED PAR Elation SixPar 200
- 2 x ZOOM PROFILE 25 - 50
- 4 x SHOWTEC Sunstrip Active DMX MKII
- 12 x PC 1kW WITH BARNDOORS
- 2 x FRESNEL 2kW WITH BARNDOORS
- 2 x FLOOD LIGHT 1000W SYMM./ASSYM
- 8 x FLOORSTAND
- 2 x TOWER

Project	power supply: ideal 2 x 63A, min. 1 x 63A and 1 x 32A (380V)	Document name	NOD SÁL
Author	lighting desk: MA2, LT Hydra, Strand, ETC, Compulite (programming desk)	Version	
<1>	ladder/tubular scaffolding/lift (Genie) till your grid	<2>	
	DIMMER PACKS: 24 channels @ 2,3kW	<3>	Drawn by: jan.mlcoch@archatheatre.cz

Scale: 1:67,66

3) Sound (provided by organizer):

FAIRY QUEEN – SOUND RIDER AND INPUT LIST

	IN	SOURCE	MIC, LINE, DI	CABLES, STANDS
DRUMMER (HONZA)	1	Kick	Beta81, D112, Beta52, Audix D6	1 x XLR, 1x mic stand low
	2	Snare (top)	SM 57	1 x XLR, (our clip)
	3	Snare (bottom)	SM 57	1 x XLR, 1x mic stand low
	4	Floor Tom	SM 57	1x XLR, 1x mic stand
	5	Hi-Hat	cond. mic	1x XLR, 1x mic stand
	6	OH (L+R)	2x OH cond. mic	2x XLR, 2x mic stand
	7			
	8	Pads	2x DI box: BSS, Radial, Palmer	2xXLR, 2x jack TRS
	9			
	10	FX (trpt, guit, synt,...)	1x DI box: BSS, Radial, Palmer	1x XLR, 1x mic stand (our mic)
ACCORDEONIST (ROMAN)	11	Accordeon L	bal. output from Line6 HD 500X	1x XLR
	12	Accordeon R	bal. output from Line6 HD 500X	1x XLR
	13	Vocal L+R	SM 58, thru FX (our FX)	3x XLR, 1x mic stand
	14			
	15	Sampler L+R	2x DI box: BSS, Radial, Palmer	2xXLR, 2x jack TRS
	16			
	17	earphone LEFT	DI box: BSS, Radial, Palmer	1x XLR
	18	earphone RIGHT	DI box: BSS, Radial, Palmer	1x XLR
			7x DI box, 8x mic	19x XLR/XLR 4x jack/jack 8x mic stand
	AUX			CABLE
	1	In Ear – stereo mixdown vocal, sampler, earphones		2x XLR
	2			
	3	In Ear – stereo mixdown drums mixdown,pad, FX		2x XLR
	4			
				4x XLR/XLR
Microphones: Audix, AKG, Shure, Sennheiser, Neumann, Audiotechnica Good quality P. A. System, e. g.: L- Acoustics, Nexo, JBL, Adamson, Martin Audio, Meyer sound, EAW, Aux Monitor Sends: 4 (2x stereo) Mix. Console: min. 24/4/2, 4band EQ with parametric mids, HPF Main EQ: 2x31 bands, Klark Teknik, BSS, DBX, etc..				

Stagebox - all the audio inputs and outputs are in the back of the stage on the scaffolding in about 2metres height.

Mixing console placed in the auditorium where the sound is well understood.



4) Crew

Number of people travelling: 10

ARTISTS: 7 (5 dancers, 2 musicians)

TECHNICAL TEAM: 3 (1 sound technician, 1 light technician, 1 production manager)

Provided by organizer:

3 riggers for scaffolding construction

2 light technicians

1 local sound technician

5) Schedule and other requirements

If the show starts at 8pm or later it is possible to set up the show in one day. It always depends on the agreement with the organizer.

The day before the show

transport of the scaffolding

preparation of the dance floor, construction of the scaffolding

The day of the show

from 09:00

technical set up

from 13:00

construction of drums and music set up, sound check

15:30

warm up dancers on stage

16:30 - 18:00

general

19:30, or 20:00

show (55 min)

2-3 heated dressing rooms with mirrors, shower and kettle required. Tea and coffee would be heartwarming.

Contact us at:

Marta Lajnerová, company manager: marta@420people.org, +420 602 666 592

Petra Kašparová, production: petra@420people.org, +420 721 600 691

Jan Mlčoch, technical director, lights: antonaut@volny.cz, +420 605 977 766

Jan Šikl, sound: honza.sikl@seznam.cz, +420 777 211 001

42OPEOPLE

contemporary dance