

RUCNÍ TAHY
29

27

25

23

21

19

18

16

14

13

11

9

7

5

3

MOTOROVÉ TAHY

33
32

FULL BLACK CURTAIN

31
30

BODOVÉ TAHY 4+

29
28

LX 6

26
BODOVÉ TAHY 2+

LX 5

24
BODOVÉ TAHY 4+

22

LX 4

20
BODOVÉ TAHY 2+

LX 3

17

NO. USE

16

BODOVÉ TAHY 4+

LX 2

12

10

BODOVÉ TAHY 2+

8

BODOVÉ TAHY 2+

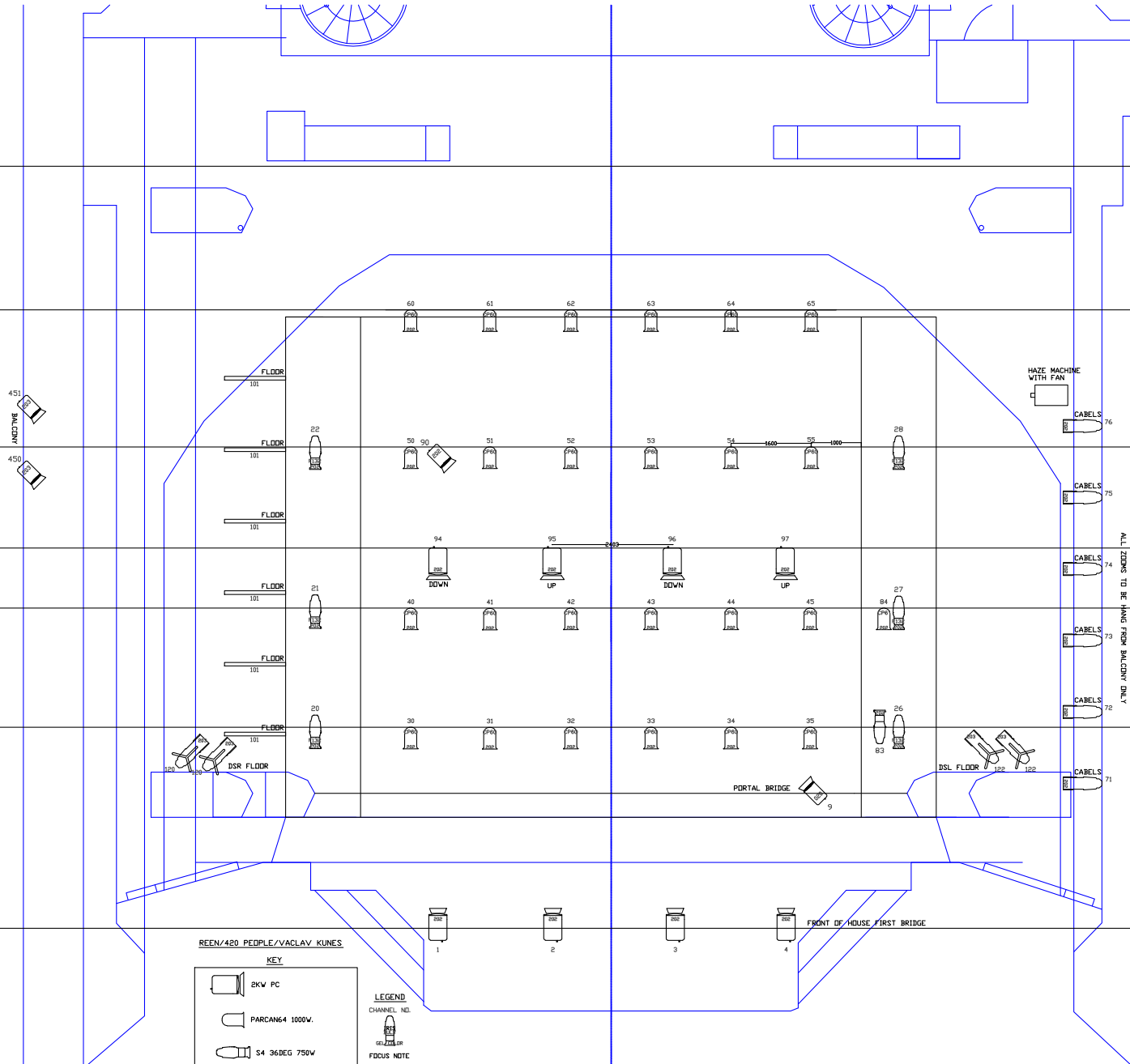
6

BODOVÉ TAHY 4+

5
4

2

TAH B1



REEN/420 PEOPLE/VACLAV KUNES
KEY

- 2KW PC
- PARCAN64 1000W.
- S4 36DEG 750W
- S4 ZOOM 25 -50 750W
- HAZE MACHINE
- FLUORESCENT T8 56W DAYLIGHT 6500K

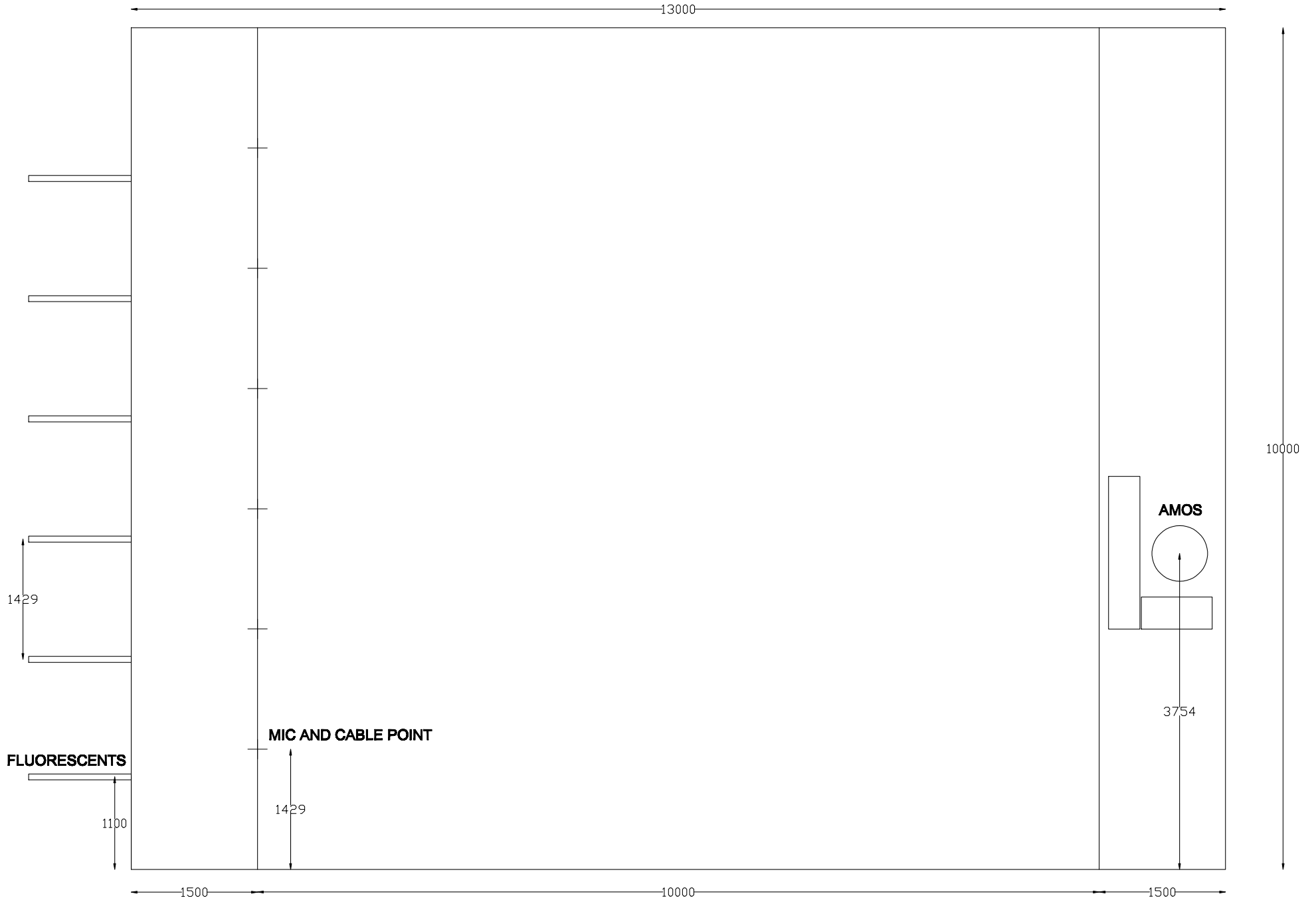
LEGEND
CHANNEL NO.
 S4 ZOOM
FOCUS NOTE

REEN/VACLAV KUNES/420 PEOPLE DANCE

DRAWN BY JACKIE SHEMESH (28.11.10)
JKSHEMESH@YAHOO.CO.UK

AA

REEN/VACLAV KUNES/420 PEOPLE DANCE



| | |
|------|------------------------------------|
| Q1 | HOUSE CURTAIN CLOSED + AMOS SP. |
| 02 | HOUSE CURTAIN OPEN + AMOS SP. |
| Q3 | KENTA ENTRANCE |
| Q3.1 | CUT: KENTA MOVE |
| Q4 | MILAN ENTRANCE |
| Q4.1 | CUT: KENTA AND MILAN MOVE |
| Q5 | ZUSKA ENTRANCE |
| Q5.1 | CUT: ZUSKA AND KENTA MOVE |
| Q6 | REI ENTRANCE |
| Q6.1 | CUT: 4 X DANCERS MOVE |

| | |
|------|---------------------------------|
| Q7 | NINA ENTRANCE |
| Q7.1 | CUT: NINA AND ZUSKA MOVE |
| Q8 | SAMIR ENTRANCE |
| 8.1 | CUT: 6 X DANCERS MOVE |
| 9 | 6 X DANCERS TO LOW DIMM |
| Q9.1 | CUT: 6 X DANCERS MOVE |
| 10 | ALL X 6 DANCERS TO LOW DIMM |
| Q11 | OPEN 2 ND LINE |
| Q12 | OPEN 3 RD LINE |
| Q13 | OPEN 4 TH LINE |

| | |
|-----|--|
| Q14 | ADD LINE OF MIC. DANCERS GOES TO LINE SL (STAGE LEFT) |
| Q15 | TAKE OFF LINE SL OF MIC. |
| Q16 | SAMIR SOLO |
| Q18 | BRINGS BACK ALL TOPS |
| Q19 | DUET SAMIR AND ZUSKA WHEN RAI AND KENTA HALF AWAY TO US (UP STAGE) |
| Q20 | DUET REI AND KENTA WHEN THE GETTING INTO TOP LIGHTS |
| Q21 | DUET REI AN KENTA WHILE NINA LEAVES THE CIRCLE REI AND KENTA STAY ALONE |
| Q22 | BOYS AFTER THE LAST NOTE OF GITAR SAMIR COMES IN WITH THE MIC. STAND |
| Q23 | CUT Q AS THE BOYS FALLS AT THE END OF THERE TRIO BRINGS UP THE FLUORESCENTS TUBES |
| Q24 | DUET NINA AND SAMIR AS SOON AS IT STARTS |

| | |
|-----------|--|
| Q25 | NOSTALGIA WHEN LEI WALKS ALONE TO DSL (DOWN STAGE LEFT) AFTER THE COUPLES |
| Q26 | FINALE TAKE FROM THE LAST NOTE OF QUIET GITAR |
| Q28 | SOLO NINA TAKE JUST BEFORE NINA FINISHES WITH HER ROPE |
| Q28.5 | END OF NINA SOLO WHEN SHE IS COMING TO DSL CORNER |
| Q29 | 2 ND LINE FOR THE END WHILE THE DANCERS HALF A WAY TO THE LINE |
| Q30 (31?) | BLACK OUT TAKE FROM LAST PLAYING NOT OF AMOS MUSIC STILL RUN AFTER THE BLACK |
| Q31 (32?) | CURTAIN CALL |